

Rustomjee®
ELEMENTS
OFF JUHU CIRCLE



Boman Irani
Chairman & Managing Director - Rustomjee

“Back in 96, when I started off, and more so today, my promises have been and are - to never substitute price for quality to always practice our strongest design principle 'Form Follows Function' and to always, always manage your business for the long term”

IT'S THOUGHTFUL. IT'S **Rustomjee®**

WE BELIEVE WE HAVE YOUR BEST INTEREST AT

HEART

THAT WE WILL TELL YOU THE TRUTH
BECAUSE WE RESPECT YOU AS A HUMAN BEING AND

CARE

MORE ABOUT YOU AND YOUR SATISFACTION
THAN WE DO ABOUT MAKING A SALE.

IT'S THOUGHTFUL. IT'S **Rustomjee®**



Estate Awards 2017
organized by Franchise India



Best Redevelopment Project of the Year (West)
– Rustomjee Elements



NATIONAL Awards for
Excellence in Real Estate
& Infrastructure 2017



- Real Estate Most Enterprising CEO of the Year – Mr. Boman R.Irani
- CSR Initiative of the Year – Educate A Child Initiative
- Luxury Project of the Year
- Rustomjee Elements-Rustomjee Seasons-Rustomjee Paramount

IT'S THOUGHTFUL. IT'S **Rustomjee**[®]

OCCUPATION CERTIFICATE
RECEIVED FOR
WINGS A, B, D, E & F

IT'S THOUGHTFUL. IT'S **Rustomjee**[®]

SCHOOLS IN THE VICINITY



CP Goenka International School - Juhu
IBDP Candidate School

HEALTHCARE



HOTELS IN & AROUND JUHU



CLUBS IN & AROUND JUHU



IT'S THOUGHTFUL. IT'S **Rustomjee®**

RUSTOMJEE ELEMENTS

- The only Gated Community Off Juhu Circle spread across 3 acres
- Liked minded gentry that comprises the Industry's Elite
- Only 2 residences per floor with the option to combine
- Lavish spacious Sun Deck in every home
- Array of 26 amenities spread across 92,000 Sq. Ft.
- Over 190 trees bring alive the tropical landscape designed by Site Concepts International from Singapore
- 3 dedicated floors for Car Park
- Infinity Edge Swimming Pool with temperature control

IT'S THOUGHTFUL. IT'S **Rustomjee**®



PATTY MAK

Lead Design Consultant

Known for her minimalist, contemporary sense of aesthetics, Patty Mak is the leading architect of **Suying Metropolitan Studio**, one of Singapore's leading Interior Architectural design firms, residences at Paramount portray Patty Mak's inimitable sense of style with their understated elegance and warmth.



JAMES LAW

Principal Architect

James Law JP, is an architect, technologist and entrepreneur. Renown for creating the philosophy of **Cybertecture** in which a better world is designed with technology to alleviate suffering for mankind, his company's projects cover buildings, spaces, technologies, education and social enterprises.



MARK MAHAN

Landscape Design Consultant

Principal and Founding Partner of **Site Concepts International Limited**, is an established Landscape Architect with over 30 years in the industry. Over his career, Mark has worked in a number of high profile Landscape Architectural projects both in the Asian region and internationally.

IT'S THOUGHTFUL. IT'S **Rustomjee®**



IT'S THOUGHTFUL. IT'S **Rustomjee®**

MASTER LAYOUT PLAN



Direction Générale de l'Urbanisme (DGU) - 100 rue de la République - 92000 Nanterre - France
 Wing A) is also known as Wing C / 19402. Available in website <http://www.urbanisme.paris.fr>
 The photos, perspectives of the building, interiors and a surrounding depicted above are only an artistic representation of a real development of construction in the development that will be subject to terms & conditions of the agreement to be entered into between the Company Promotee & the requestor/submitter.

OCCUPATION CERTIFICATE RECEIVED FOR WINGS A, B, D, E & F



Occupation Certificate bearing No.15/2017/105/AM dated 13th June 2017 issued for Wing A, B, D, E & F. Project Approval Document: Wing D) registered with Maharashtra under Registration No.F1180001180. Wing E) is also known as Wing G. / 4th Floor. Reference Document: Wing D) registered with Maharashtra under Registration No.F1180001180. Wing G) is also known as Wing E. / 10th Floor. Available at website <http://maharashtra.gov.in>. The pictures, photographs of the building, interiors and a surrounding depicted there are only an artistic representation of a real-time development of construction in the development shall be subject to terms & conditions of the agreement to sale to be entered into between the Company/ Promoter & the respective allottee.

OUTDOOR PODIUM FACILITIES -
SPREAD ACROSS 40,000 SQ. FT.



PODIUM

IT'S THOUGHTFUL. IT'S **Rustomjee®**



TREE HOUSE & MEETING AREA LOUNGE

IT'S THOUGHTFUL. IT'S **Rustomjee®**



WALK-WAY

IT'S THOUGHTFUL. IT'S **Rustomjee**



FOUNTAIN & CENTRAL GREEN PLAZA

IT'S THOUGHTFUL. IT'S **Rustomjee®**



MULTI-GAMES COURT

IT'S THOUGHTFUL. IT'S **Rustomjee**[®]

OUTDOOR PODIUM FACILITIES - SPREAD ACROSS 40,000 SQ. FT.

	FOUNTAIN	OCT 2017		SENIORS' PAVILLION	NOV 2017
	READING LOUNGE*	NOV 2017		TREE HOUSE	NOV 2017
	REFLEXOLOGY PATH	NOV 2017		WALK-WAY	NOV 2017
	CENTRAL GREEN PLAZA	NOV 2017		MULTI- GAMES COURT (FUTSAL & TENNIS)	NOV 2017
	MEETING AREA LOUNGE*	NOV 2017		HAMMOCK	DEC 2020

*PART OF LANDSCAPE FEATURES

IT'S THOUGHTFUL. IT'S **Rustomjee®**

INDOOR CLUBHOUSE FACILITIES -
SPREAD ACROSS 15,000 SQ. FT.



MEET AND GREET

IT'S THOUGHTFUL. IT'S **Rustomjee®**



MEET AND GREET

IT'S THOUGHTFUL. IT'S **Rustomjee**®



PREVIEW THEATRE

IT'S THOUGHTFUL. IT'S **Rustomjee**



SPA



IT'S THOUGHTFUL. IT'S **Rustomjee®**



INDOOR GAMES

IT'S THOUGHTFUL. IT'S **Rustomjee**



TABLE TENNIS

IT'S THOUGHTFUL. IT'S **Rustomjee®**



INDOOR GAMES

IT'S THOUGHTFUL. IT'S **Rustomjee**®



BANQUET HALL

IT'S THOUGHTFUL. IT'S **Rustomjee®**



© 2015 KUSTOMJEE

IT'S THOUGHTFUL. IT'S **Kustomjee®**



GYMNASIUM

IT'S THOUGHTFUL. IT'S **Rustomjee®**












ARTIST CONCEPT

GYMNASIUM

IT'S THOUGHTFUL. IT'S **Rustomjee®**

INDOOR CLUB HOUSE FACILITIES - SPREAD ACROSS 15,000 SQ. FT.

	SPA	MAR 2018		BUSINESS CENTRE	MAR 2018
	TABLE TENNIS	MAR 2018		KIDS PLAY AREA	MAR 2018
	SNOOKER	MAR 2018		PREVIEW THEATRE	JUN 2018
	FULLY EQUIPPED GYMNASIUM	MAR 2018		BANQUET HALL*	DEC 2019
				SKY LOUNGE*	DEC 2019

*COMING UP WITH WING 'C'/ IGNIS

IT'S THOUGHTFUL. IT'S **Rustomjee®**

ROOFTOP FACILITIES -
SPREAD ACROSS 37,000 SQ. FT.



JOGGING / WALKING TRACK

IT'S THOUGHTFUL. IT'S **Rustomjee**[®]



PARTY DECK

IT'S THOUGHTFUL. IT'S **Rustomjee**[®]



PARTY DECK

IT'S THOUGHTFUL. IT'S **Kustomjee**®



SKY DECK

IT'S THOUGHTFUL. IT'S **Rustomjee®**



INFINITY EDGE POOL

IT'S THOUGHTFUL. IT'S **Rustomjee**[®]

PHOTO: JAMES FLEMING / GETTY IMAGES

ROOFTOP FACILITIES - SPREAD ACROSS 37,000 SQ. FT.

	JOGGING/ WALKING TRACK	OCT 2017		SKY DECK	DEC 2017
	PARTY DECK	NOV 2017		COFFEE DECK	DEC 2017
	SEATING DECK	NOV 2017		MOVABLE BBQ PIT	DEC 2017
	MINI BAR SPACE	NOV 2017		LAP POOL & KIDS' POOL*	DEC 2019

*COMING UP WITH WING 'C'/ IGNIS

IT'S THOUGHTFUL. IT'S **Rustomjee**®



LOBBY

ACTUAL PHOTOGRAPH

IT'S THOUGHTFUL. IT'S **Rustomjee®**

Dedicated Staff Room with attached bathroom

East-West Direction Cross Ventilation

Separate Staff entry

Powder room in every residence

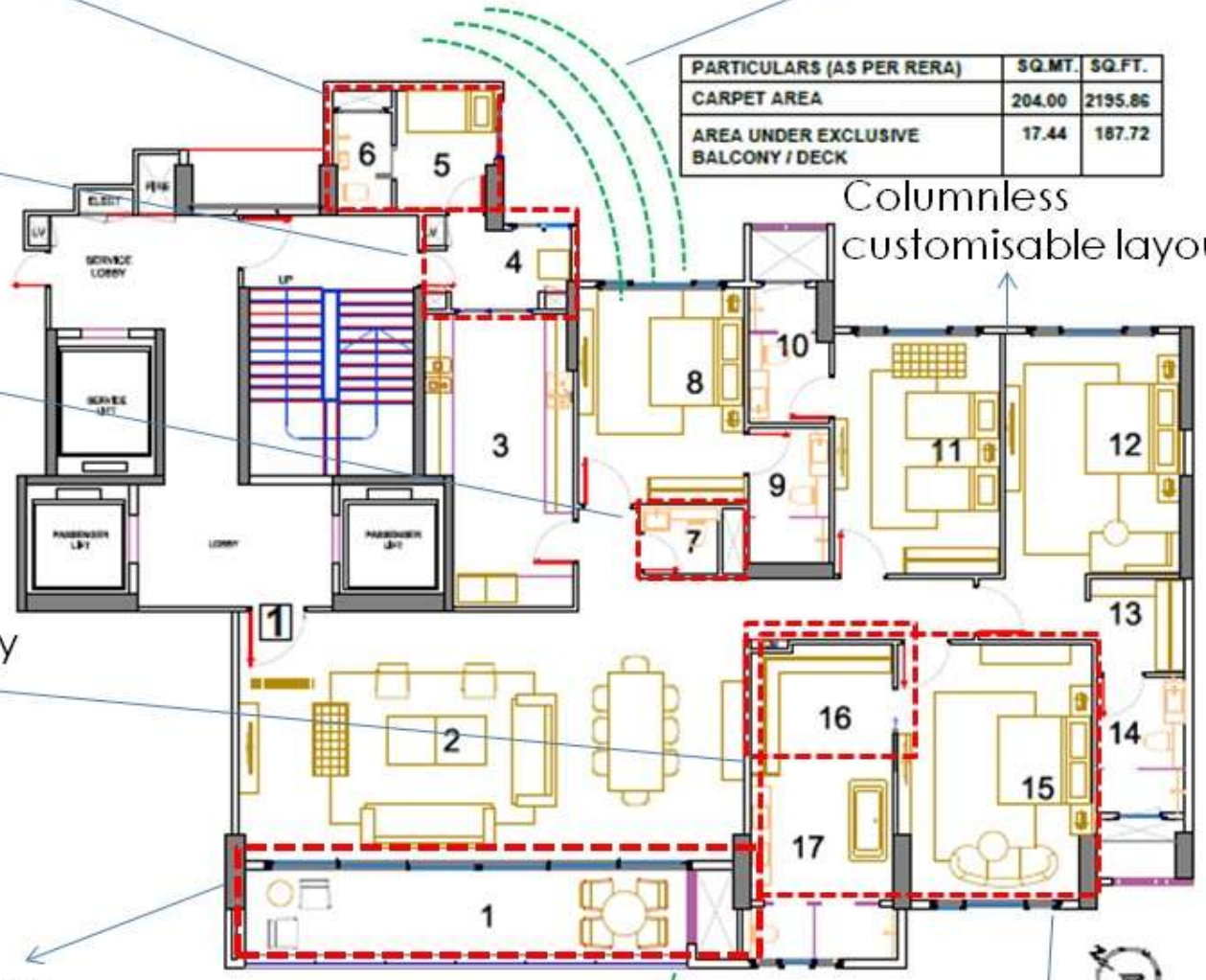
Walk-in wardrobe in every Master Bedroom

188 Sq.ft sundecks in the living room

PARTICULARS (AS PER RERA)	SQ.MT.	SQ.FT.
CARPET AREA	204.00	2195.86
AREA UNDER EXCLUSIVE BALCONY / DECK	17.44	187.72

Columnless customisable layouts

Largest Master Bedroom and Washroom of 400 Sq. ft Carpet





THE
CHARCOAL
PROJECT

RUSTOMJEE UNVEILS
SIGNATURE HOMES
BY
Sussanne Khan





ACTUAL PHOTOGRAPH

DISCLAIMER

- Occupation Certificate bearing No. bearing No.CE/8871/WS/AK dated 13th June 2017 received for Wings SA, SB, SD, SE & SF.
- Project: Rustomjee Elements - Wing SG registered with MahaRERA under Registration No.P51800001382 available at website:<http://maharera.mahaonline.gov.in>.
Wing SG is also known as Wing G / AER.
- Project: Rustomjee Elements - Wing SC registered with MahaRERA under Registration No.P51800005738 available at website:<http://maharera.mahaonline.gov.in>.
Wing SC is also known as Wing C / IGNIS.
- All transactions in this development shall be subject to terms & conditions of the agreement for sale to be entered into between the Company/Promoter & the recipient/allottee.

THANK YOU

IT'S THOUGHTFUL. IT'S **Rustomjee**[®]